

**TEST CONDITIONS**

Test Date	12/9/2020
Test Conductor	thayes3
Boat Weight as Tested (lbs)	5565
Air Temperature (degrees F)	51
Elevation (ft)	0
Sea State	Clam
Wind Velocity range (mph)	5 to 10
Fresh/Salt Water	Brackish
Fuel Level at Testing (gal)	45

**ENGINE SPECIFICATIONS**

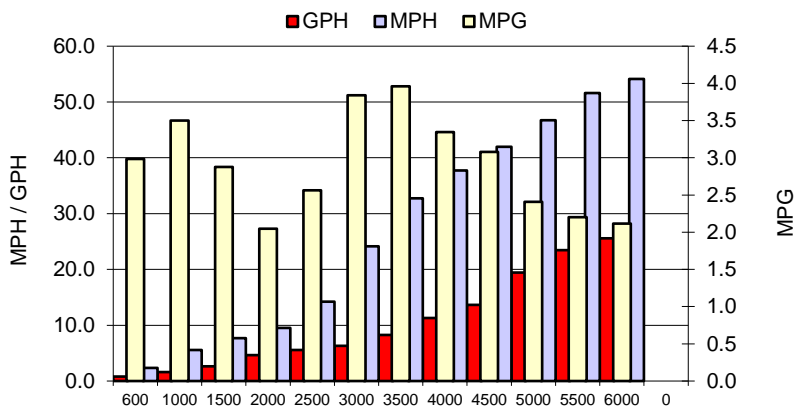
Number of Engines	1
Engine	V8 FourStroke
Horsepower	300
Cylinders	8
Drive or gear model and ratio	HD Straight 1.75
Mounting Bolt Hole	2
Engine Height (in)	Jack Plate
Engine Setback (in)	38
Engine Length (in)	25

**PERFORMANCE SUMMARY**

Top Speed (mph @ rpm)	54.9	5891
Acceleration 0 - 20 mph (seconds)	4.74	
Acceleration 0 - 30 mph (seconds)	6.74	

**PROPELLER SPECIFICATIONS**

Mercury Name	Enertia ECO
Material	Stainless Steel
Pitch	19
Number of Blades	3

**PERFORMANCE CURVE**

**BOAT SPECIFICATIONS**

Region/s sold	
Manufacturer	Pair Customs
Website	
Boat Model	2400
Boat Type	Offshore Saltwater Fish
Material	Fiberglass
Length (ft)	23.7
Beam (ft)	8.5
Max hp Capacity	400
Fuel Tank Capacity (gal)	103
Steering Type	Steer-by-Wire
Dry Boat Weight (lbs)	4300

**PERFORMANCE DATA**

RPM	SPEED	FUEL CONSUMPTION	FUEL CONSUMPTION	RANGE
RANGE	MPH	GPH	MPG	MILES
600	2.4	0.8	3.0	307
1000	5.6	1.6	3.5	360
1500	7.7	2.7	2.9	296
2000	9.5	4.6	2.0	211
2500	14.2	5.6	2.6	264
3000	24.2	6.3	3.8	395
3500	32.7	8.3	4.0	408
4000	37.7	11.3	3.3	345
4500	42.0	13.6	3.1	317
5000	46.7	19.4	2.4	248
5500	51.6	23.5	2.2	227
6000	54.1	25.6	2.1	218
0	0.0	0.0	0.0	0
0	0.0	0.0	0.0	0