

TEST CONDITIONS

Test Date	12/7/2021
Test Conductor	thayes3
Boat Weight as Tested (lbs)	4960
Air Temperature (degrees F)	45
Elevation (ft)	0
Sea State	Calm
Wind Velocity range (mph)	5 to 10
Fresh/Salt Water	Brackish
Fuel Level at Testing (gal)	80

ENGINE SPECIFICATIONS

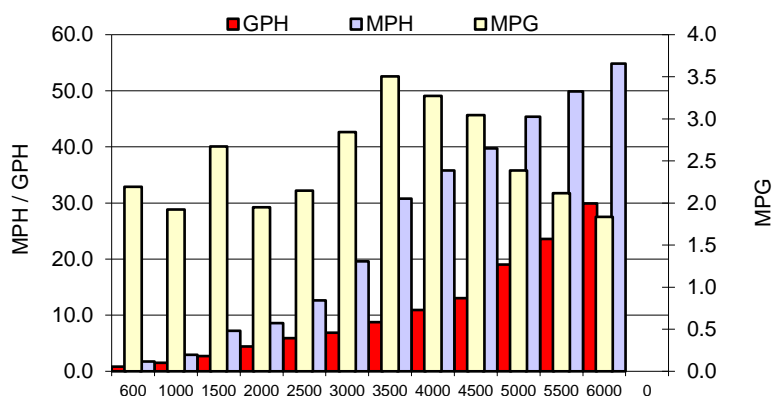
Number of Engines	1
Engine	V8 Verado/300R
Horsepower	300
Cylinders	8
Drive or gear model and ratio	HD Camber 1.85
Mounting Bolt Hole	2
Engine Height (in)	6
Engine Setback (in)	46
Engine Length (in)	25

PERFORMANCE SUMMARY

Top Speed (mph @ rpm)	56.2	6309
Acceleration 0 - 20 mph (seconds)	5.57	
Acceleration 0 - 30 mph (seconds)	7.94	

PROPELLER SPECIFICATIONS

Mercury Name	Enertia ECO
Material	Stainless Steel
Pitch	19
Number of Blades	3

PERFORMANCE CURVE

BOAT SPECIFICATIONS

Region/s sold	
Manufacturer	Pair Customs
Website	
Boat Model	21 DV
Boat Type	Offshore Saltwater Fish
Material	Fiberglass
Length (ft)	21
Beam (ft)	8.5
Max hp Capacity	300
Fuel Tank Capacity (gal)	80
Steering Type	Power Steering
Dry Boat Weight (lbs)	3100

PERFORMANCE DATA

RPM	SPEED	FUEL CONSUMPTION	FUEL CONSUMPTION	RANGE
RANGE	MPH	GPH	MPG	MILES
600	1.8	0.8	2.2	175
1000	3.0	1.5	1.9	154
1500	7.2	2.7	2.7	214
2000	8.6	4.4	1.9	156
2500	12.6	5.9	2.1	172
3000	19.6	6.9	2.8	227
3500	30.8	8.8	3.5	280
4000	35.8	10.9	3.3	262
4500	39.8	13.1	3.0	244
5000	45.4	19.0	2.4	191
5500	49.9	23.6	2.1	169
6000	54.9	29.9	1.8	147
0	0.0	0.0	0.0	0
0	0.0	0.0	0.0	0