

**TEST CONDITIONS**

Test Date	10/22/2020
Test Conductor	thayes3
Boat Weight as Tested (lbs)	4635
Air Temperature (degrees F)	78
Elevation (ft)	0
Sea State	Clam
Wind Velocity range (mph)	0 to 5
Fresh/Salt Water	Brackish
Fuel Level at Testing (gal)	80

**ENGINE SPECIFICATIONS**

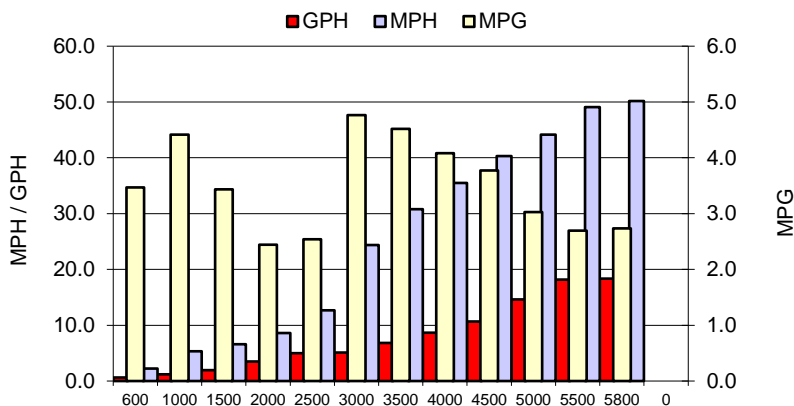
Number of Engines	1
Engine	V6 FourStroke
Horsepower	200
Cylinders	6
Drive or gear model and ratio	Standard 1.85
Mounting Bolt Hole	2
Engine Height (in)	3.5
Engine Setback (in)	37
Engine Length (in)	25

**PERFORMANCE SUMMARY**

Top Speed (mph @ rpm)	50.2	5711
Acceleration 0 - 20 mph (seconds)	6.13	
Acceleration 0 - 30 mph (seconds)	8.43	

**PROPELLER SPECIFICATIONS**

Mercury Name	Enertia ECO XP
Material	Stainless Steel
Pitch	17.5
Number of Blades	3

**PERFORMANCE CURVE**

**BOAT SPECIFICATIONS**

Region/s sold	
Manufacturer	Pair Customs
Website	
Boat Model	21 Center Console
Boat Type	Offshore Saltwater Fish
Material	Fiberglass
Length (ft)	21
Beam (ft)	8.5
Max hp Capacity	300
Fuel Tank Capacity (gal)	80
Steering Type	Hydraulic Steering
Dry Boat Weight (lbs)	3100

**PERFORMANCE DATA**

RPM	SPEED	FUEL CONSUMPTION	FUEL CONSUMPTION	RANGE
RANGE	MPH	GPH	MPG	MILES
600	2.2	0.6	3.5	278
1000	5.3	1.2	4.4	353
1500	6.6	1.9	3.4	275
2000	8.6	3.5	2.4	195
2500	12.7	5.0	2.5	203
3000	24.4	5.1	4.8	381
3500	30.8	6.8	4.5	361
4000	35.5	8.7	4.1	327
4500	40.3	10.7	3.8	302
5000	44.2	14.6	3.0	242
5500	49.1	18.2	2.7	216
5800	50.2	18.3	2.7	219
0	0.0	0.0	0.0	0
0	0.0	0.0	0.0	0