

TEST CONDITIONS

Test Date	10/12/2021
Test Conductor	thayes3
Boat Weight as Tested (lbs)	6435
Air Temperature (degrees F)	77
Elevation (ft)	0
Sea State	Calm
Wind Velocity range (mph)	5 to 10
Fresh/Salt Water	Brackish
Fuel Level at Testing (gal)	50

ENGINE SPECIFICATIONS

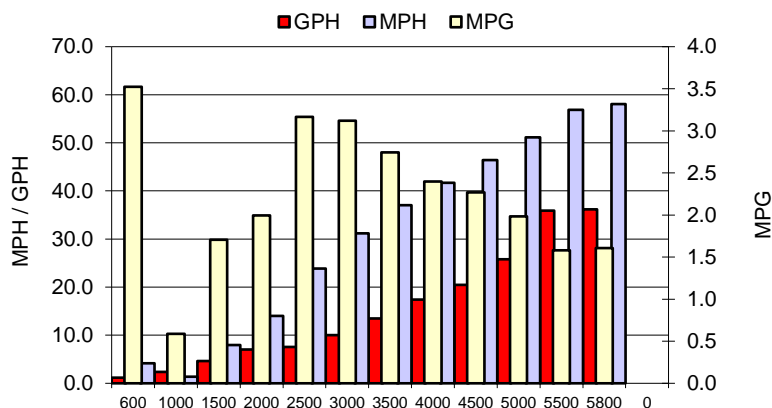
Number of Engines	2
Engine	V6 FourStroke
Horsepower	200
Cylinders	6
Drive or gear model and ratio	Standard 1.85
Mounting Bolt Hole	2,2
Engine Height (in)	4.5,4.5
Engine Setback (in)	36.0,36.0
Engine Length (in)	25,25

PERFORMANCE SUMMARY

Top Speed (mph @ rpm)	58.5	5784
Acceleration 0 - 20 mph (seconds)	6.18	
Acceleration 0 - 30 mph (seconds)	7.88	

PROPELLER SPECIFICATIONS

Mercury Name	Enertia ECO
Material	Stainless Steel
Pitch	20.0,20.0
Number of Blades	3

PERFORMANCE CURVE

BOAT SPECIFICATIONS

Region/s sold	
Manufacturer	Pair Customs
Website	
Boat Model	24 DV
Boat Type	Offshore Saltwater Fish
Material	Fiberglass
Length (ft)	24
Beam (ft)	8.5
Max hp Capacity	
Fuel Tank Capacity (gal)	150
Steering Type	Power Steering
Dry Boat Weight (lbs)	4300

PERFORMANCE DATA

RPM	SPEED	FUEL CONSUMPTION	FUEL CONSUMPTION	RANGE
RANGE	MPH	GPH	MPG	MILES
600	4.1	1.2	3.5	529
1000	1.4	2.4	0.6	88
1500	7.9	4.7	1.7	256
2000	14.0	7.0	2.0	299
2500	23.9	7.5	3.2	475
3000	31.2	10.0	3.1	468
3500	37.0	13.5	2.7	411
4000	41.7	17.4	2.4	360
4500	46.4	20.5	2.3	340
5000	51.1	25.8	2.0	298
5500	56.9	35.9	1.6	237
5800	58.1	36.2	1.6	241
0	0.0	0.0	0.0	0
0	0.0	0.0	0.0	0