

TEST CONDITIONS

| | |
|-----------------------------|-----------|
| Test Date | 12/7/2021 |
| Test Conductor | thayes3 |
| Boat Weight as Tested (lbs) | 6950 |
| Air Temperature (degrees F) | 45 |
| Elevation (ft) | 0 |
| Sea State | Calm |
| Wind Velocity range (mph) | 5 to 10 |
| Fresh/Salt Water | Brackish |
| Fuel Level at Testing (gal) | 150 |

ENGINE SPECIFICATIONS

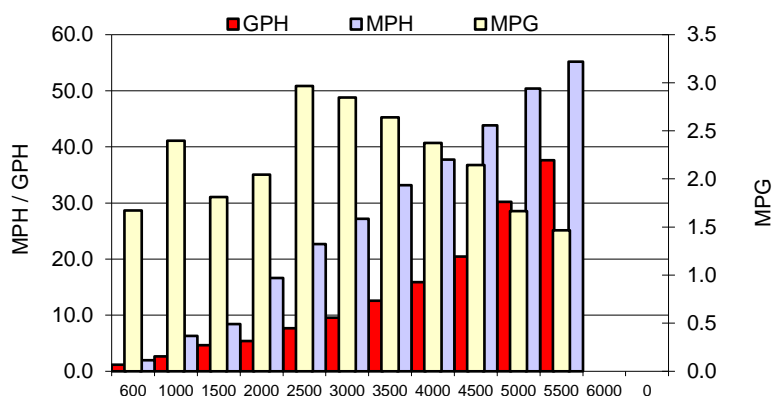
| | |
|-------------------------------|----------------|
| Number of Engines | 2 |
| Engine | V6 FourStroke |
| Horsepower | 225 |
| Cylinders | 6 |
| Drive or gear model and ratio | HD Camber 1.85 |
| Mounting Bolt Hole | 2,2 |
| Engine Height (in) | 6.5,6.5 |
| Engine Setback (in) | 36.0,36.0 |
| Engine Length (in) | 25,25 |

PERFORMANCE SUMMARY

| | | |
|-----------------------------------|------|------|
| Top Speed (mph @ rpm) | 58.4 | 5857 |
| Acceleration 0 - 20 mph (seconds) | 6.14 | |
| Acceleration 0 - 30 mph (seconds) | 8.36 | |

PROPELLER SPECIFICATIONS

| | |
|------------------|-----------------|
| Mercury Name | Revolution 4 |
| Material | Stainless Steel |
| Pitch | 21.0,21.0 |
| Number of Blades | 4 |

PERFORMANCE CURVE

BOAT SPECIFICATIONS

| | |
|--------------------------|-------------------------|
| Region/s sold | |
| Manufacturer | Pair Customs |
| Website | |
| Boat Model | 24 DV |
| Boat Type | Offshore Saltwater Fish |
| Material | Fiberglass |
| Length (ft) | 24 |
| Beam (ft) | 8.5 |
| Max hp Capacity | 450 |
| Fuel Tank Capacity (gal) | 150 |
| Steering Type | Power Steering |
| Dry Boat Weight (lbs) | 4300 |

PERFORMANCE DATA

| RPM | SPEED | FUEL CONSUMPTION | FUEL CONSUMPTION | RANGE |
|-------|-------|------------------|------------------|-------|
| RANGE | MPH | GPH | MPG | MILES |
| 600 | 2.0 | 1.2 | 1.7 | 251 |
| 1000 | 6.3 | 2.6 | 2.4 | 360 |
| 1500 | 8.4 | 4.6 | 1.8 | 272 |
| 2000 | 16.6 | 5.4 | 2.0 | 307 |
| 2500 | 22.7 | 7.7 | 3.0 | 445 |
| 3000 | 27.2 | 9.5 | 2.8 | 427 |
| 3500 | 33.2 | 12.6 | 2.6 | 396 |
| 4000 | 37.8 | 15.9 | 2.4 | 356 |
| 4500 | 43.8 | 20.4 | 2.1 | 322 |
| 5000 | 50.4 | 30.2 | 1.7 | 250 |
| 5500 | 55.2 | 37.6 | 1.5 | 220 |
| 6000 | 0.0 | 0.0 | 0.0 | 0 |
| 0 | 0.0 | 0.0 | 0.0 | 0 |
| 0 | 0.0 | 0.0 | 0.0 | 0 |